

5th Grade Vocabulary Unit 1

Name: _____

5.L.4.B – Use common, grade-appropriate Greek and Latin affixes and roots as clues to the meaning of a word.



Part A: Meet the Root



Divide and Conquer

Directions: "Divide" words and then "conquer" them by writing the meaning of the words. Use the Root Bank at the bottom of the page to help you remember what each of the parts means. An X means the word does not have a prefix or a base.

	prefix means	base means	word means
1. export	<u>out</u>	<u>carry</u>	<u>to carry or send things out of the country</u>
2. portable	<u>X</u>	<u> </u>	<u> </u>
3. inspect	<u> </u>	<u> </u>	<u> </u>
4. invoke	<u> </u>	<u> </u>	<u> </u>
5. multivocal	<u> </u>	<u> </u>	<u> </u>
6. respect	<u> </u>	<u> </u>	<u> </u>
7. subtract	<u> </u>	<u> </u>	<u> </u>
8. autograph	<u> </u>	<u> </u>	<u> </u>
9. visible	<u>X</u>	<u> </u>	<u> </u>
10. unify	<u> </u>	<u>X</u>	<u> </u>

Root Bank

Prefixes: *auto-* = self; *ex-* = out; *in-* = in, on, into; *multi-* = many; *re-* = back, again; *sub-* = under; *tri-* = three; *uni-* = one

Bases: *audi, audit* = hear or listen; *port* = carry; *graph* = write; *spect* = watch, look at; *terr* = land, ground, earth; *tract* = pull, draw, drag; *vis* = see; *voc, voke* = call, voice

Suffixes: *-able, -ible* = can or able to be done; *-ify* = to make

Part B:
Combine and Create

Making Words

Directions: Write one sentence that includes both of these words. Use the Root Bank in "Divide and Conquer" to figure out any words that are new.

1. terrier

spectacles

2. voice

spectator

3. subtract

vocabulary

4. trace

Mediterranean Sea

5. invoke

auditorium



Part C:
Read and Reason

What Do You Know?

Directions: Answer the questions.



1. What is the major difference between a *terrarium* and an *aquarium*?

2. Is an earthworm a *subterranean* animal or a *subaquatic* animal? Why?

3. What is the difference between *vocalizing* and *subvocalizing*?

4. What is the difference between a *vocal* clue and an *auditory* clue?

Part D:
Extend and Explore

Sentence Starters

Directions: Work with a partner to complete these sentences using a word from the list. Together choose one of the sentences to read out loud, but skip over the word from the list. See if your classmates can guess the missing word. Use the Root Bank in "Divide and Conquer" to figure out any words that are new.

Word List:

detract	contract	vocal	revoke
terrarium	terracotta	spectacular	spectator
auditorium	inaudible	audible	

Sentences:

1. While I was trying to _____

2. How do you know if _____

3. Where in the world can _____

4. What would you think about _____

5. Why should _____



Part E:
Go for the Gold!

Sixteen Square Wordo

Directions: This game is like Bingo. First, choose a free box and mark it with an X. Then choose words from the word list provided by your teacher and write one word in each box. You can choose the box for each word. Then, your teacher will give a clue for each word. Make an X in the box for each word you match to the clue. If you get four Xs in a row, column, diagonal, or four corners, call out, "Wordo!"

Name: _____

Unit: _____ Lesson: _____

Circle one:

Prefix

Base

Suffix

Definition: _____

Words with this prefix/base/suffix:

Word Work Activities

Choose 3 words with this prefix/base/suffix and define each word.

Choose 3 words with this prefix/base/suffix and find synonyms and antonyms for each word.

Name: _____

Unit: _____ Lesson: _____

Choose 3 words with this prefix/base/suffix and use each word in a sentence.

Choose 3 words with this prefix/base/suffix and draw a picture for each word.

Find 2 words with this prefix/base/suffix in an authentic text. Write the sentence in which it is found and circle the word.

Part A:
Meet the Root



Divide and Conquer

Directions: "Divide" words and then "conquer" them by writing the meaning of the words. There are two sets of "Divide and Conquer" exercises. All words in List A begin with directional prefixes *dis-*, *di-*, *dif-* and mean "apart, in different directions." All words in List B begin with negative *dis-* and mean "not." Bases have been provided for some of the words.

LIST A: Directional *dis-*, *di-*, *dif-*

	prefix means	base means	word means
1. disturb	<u>apart</u>	<u>turb = shake, agitate</u>	<u>to shake apart</u>
2. direct	<u> </u>	<u>rect = straight, guide</u>	<u> </u>
3. dissolve	<u> </u>	<u>solv = break, loosen</u>	<u> </u>
4. differ	<u> </u>	<u>fer = bear, go</u>	<u> </u>
5. disposal	<u> </u>	<u>pos = put</u>	<u> </u>

LIST B: Negative *dis-*

6. dissatisfied	<u> </u>	<u> </u>	<u> </u>
7. disqualified	<u> </u>	<u> </u>	<u> </u>
8. disapprove	<u> </u>	<u> </u>	<u> </u>
9. dishonor	<u> </u>	<u> </u>	<u> </u>
10. disability	<u> </u>	<u> </u>	<u> </u>

**Part B:**
Combine and Create**Word Sort**

Directions: Look at these words. Put them on the chart where they belong.

distract
disturbance
different

disruption
dissatisfied
disposal

dispel
discourage
diversity

dislocated
disagreeable
dissect

distributor
dismiss
digest

has a suffix	does not have a suffix

Circle three words from the “has a suffix” column. Write them below.
Then write them without the suffix.

With the suffix

Without the suffix

Part C:
Read and Reason



Journal Entry

Directions: Read the following journal entry and answer the questions.

Dear Diary,

I write today to dissect my thoughts. Today, my friends and I went to a movie after school. This horror movie caused me to have dilated pupils the whole time, my anxiety and adrenaline on full alert. It was really disturbing, but I don't really know what part bothered me the most. Maybe tonight, when I fall asleep, I will dream of the things that most disrupted my inner thoughts and sense of security.

Until then,

Disturbed Derek



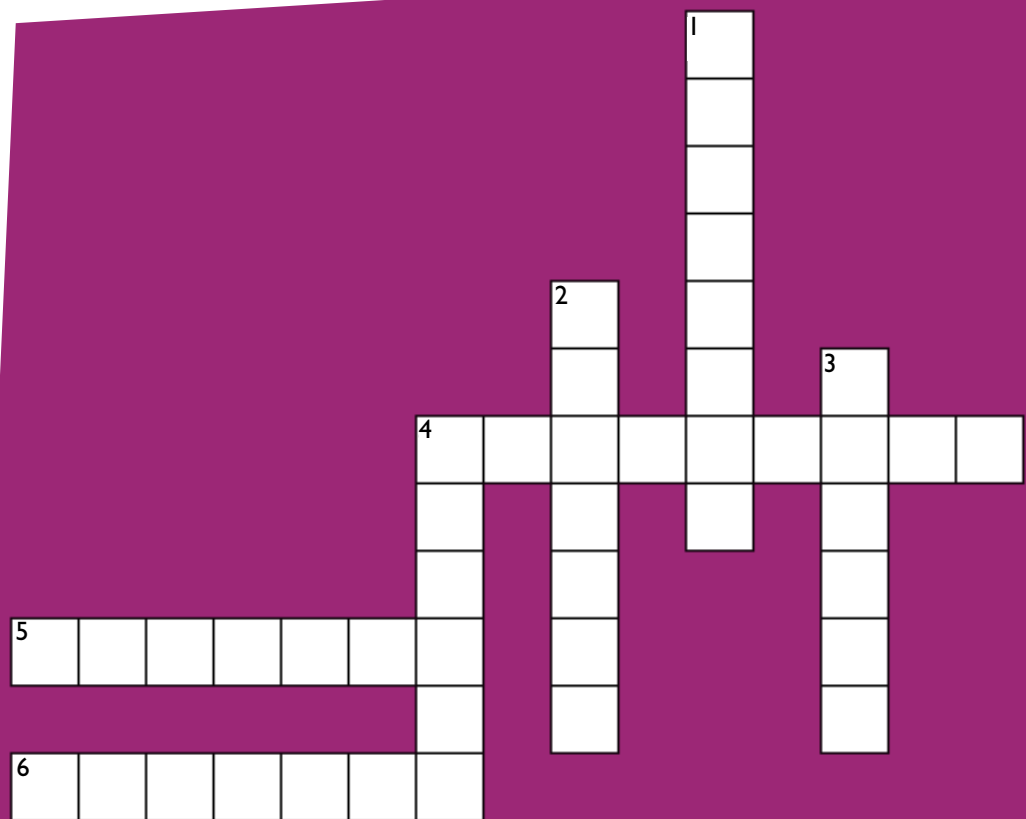
Questions:

1. How does Derek feel about the movie? How do you know?

2. In the last sentence, what does *disrupted* mean? How do you know?

**Part D:**
Extend and Explore**Crossword Puzzle**

Directions: Read the clues and complete the crossword puzzle.

**Across**

4. the state of not believing
5. to get rid of or throw away
6. to take apart

Down

1. to differ in opinion; argue
2. to break the quiet or calm
3. to drive apart
4. to tell someone the way to a place

Part E:

Go for the Gold!



Word Search

Directions: Find the words listed below in the puzzle. Words can be across, down, diagonal, or backwards.

DISTURBANCE
DISTRACT
DISRUPT
DISPOSE

DIFFER
DIVERT
DIGEST
DIRECT

DISLOCATED
DISSOLVE
DISTRIBUTE
DISMISS

C	T	O	U	N	M	B	B	M	V	C	T	R	B
P	S	O	Q	Z	C	R	T	G	D	V	R	E	S
R	E	D	I	S	T	U	R	B	A	N	C	E	S
D	G	O	P	K	F	M	E	U	Y	Y	T	G	M
N	I	P	G	R	D	D	S	A	S	F	T	T	U
W	D	V	D	C	I	S	O	C	X	R	T	U	P
Q	I	D	I	S	R	U	P	T	E	W	E	T	J
Y	S	B	S	W	T	C	S	V	A	E	N	D	B
P	M	Y	T	Q	W	A	I	S	G	Y	T	I	T
O	I	L	R	L	E	D	D	I	F	F	E	R	Y
E	S	H	A	T	D	I	S	S	O	L	V	E	T
A	S	M	C	R	O	N	O	S	R	E	D	C	N
M	O	N	T	D	I	S	T	R	I	B	U	T	E
D	I	S	L	O	C	A	T	E	D	I	V	E	K
O	S	E	S	A	A	E	L	P	E	M	V	O	L



Part A: Meet the Root

Divide and Conquer



Directions: "Divide" words and then "conquer" them by writing the meaning of the words. Remember that *a-, ab-, abs-* mean "away" or "from."

	prefix means	base means	word means
1. abnormal	<u>away, from</u>	<u>norm = norm</u>	<u>away from what is normal</u>
2. abduct	<u> </u>	<u>duct = lead</u>	<u> </u>
3. abrasive	<u> </u>	<u>ras = scrape</u>	<u> </u>
4. absent	<u> </u>	<u>(s)ent = be</u>	<u> </u>
5. abstain	<u> </u>	<u>tain = hold</u>	<u> </u>
6. abrupt	<u> </u>	<u>rupt = break</u>	<u> </u>
7. absorbent	<u> </u>	<u>sorb = soak</u>	<u> </u>
8. avocation	<u> </u>	<u>voc = call(ing)</u>	<u> </u>
9. avert	<u> </u>	<u>vert = turn</u>	<u> </u>
10. aborigine	<u> </u>	<u>origin = originate</u>	<u> </u>

DID YOU KNOW?

The word *aborigine* refers to a country's original inhabitants who are the first people to live in or come "from" that land. The term *aborigine* was first used to describe the earliest people to live in Greece and Italy. Today there are many aboriginal colonies living in the vast and largely unexplored continent of Australia.

Part B:
Combine and Create



Making and Writing Words

Directions: Use the vowels and consonants to make words that fit the clues.
The secret word uses all the letters.

Consonants:

B C D T

Vowels:

A E I A

1. A little bit; a palindrome for "bad": _____
2. An offer; rhymes with "hid": _____
3. Small cubes used to play board games: _____
4. The regular rise and fall of the ocean: _____
5. To become less (e.g., The hurricane winds will _____ soon.):

Secret Word: to give up a high position of power; to resign from being king or queen _____

**Part C:**
Read and Reason**Advice Column**

Directions: Read the following advice column and try to help Adelia Advice respond to Abnormal Abby by filling in the blanks.

Dear Adelia Advice,

Lately, I have had an abundance of problems. I have an abnormal ability to always get in trouble at school. Two days ago, my friend skipped class, and when the teacher asked me where he might be, I abruptly said, "I don't know." The teacher thought I was being rude and gave me detention. What can I do to abstain from getting in trouble?

Thanks,

Abnormal Abby



Dear Abnormal Abby,

First I do not believe you have an _____ of problems. If you did, you would need help in many, many areas. It sounds like school is your only concern for now. Second, it's not too _____ or different to get in trouble at school. Most kids have a bad day now and then. So, my advice is to apologize to your teacher and then tell her you didn't mean to be rude. Hopefully, that's all the help you need.

Adelia Advice

Part D:
Extend and Explore



Word Search

Directions: Find the words listed below in the puzzle. Words can be across, down, diagonal, or backwards.

ABDICATE
ABHOR
ABNORMAL
ABRASIVE

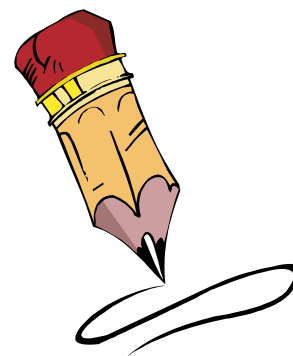
ABRUPT
ABSENT
ABSENTEE
ABSORB

ABSTAIN
ABSTRACT
AVERT

I	L	U	T	X	E	X	H	S	X	N	E	V	L	D
U	I	J	K	E	X	T	M	T	E	T	E	L	I	L
M	A	V	L	G	S	C	A	X	V	W	T	O	J	U
M	T	L	T	L	Y	A	W	C	J	B	N	Z	W	C
B	R	P	B	A	B	R	A	S	I	V	E	C	L	R
W	Q	L	U	M	C	T	V	M	E	D	S	R	Y	Q
C	F	T	A	R	K	S	E	W	L	D	B	Y	K	Z
L	U	A	O	O	B	B	R	O	S	B	A	A	H	M
A	L	H	N	N	I	A	T	S	B	A	E	Z	V	E
K	B	B	O	B	G	J	R	F	V	G	K	B	Q	D
A	C	S	C	A	B	S	M	N	L	Z	V	M	U	L
D	Q	M	E	R	P	A	H	K	E	J	M	J	T	N
P	M	C	N	N	P	H	M	F	S	X	D	H	N	J
H	N	E	V	V	T	H	B	V	H	D	Q	Z	T	J
H	D	A	O	W	H	F	I	A	S	N	P	N	I	K

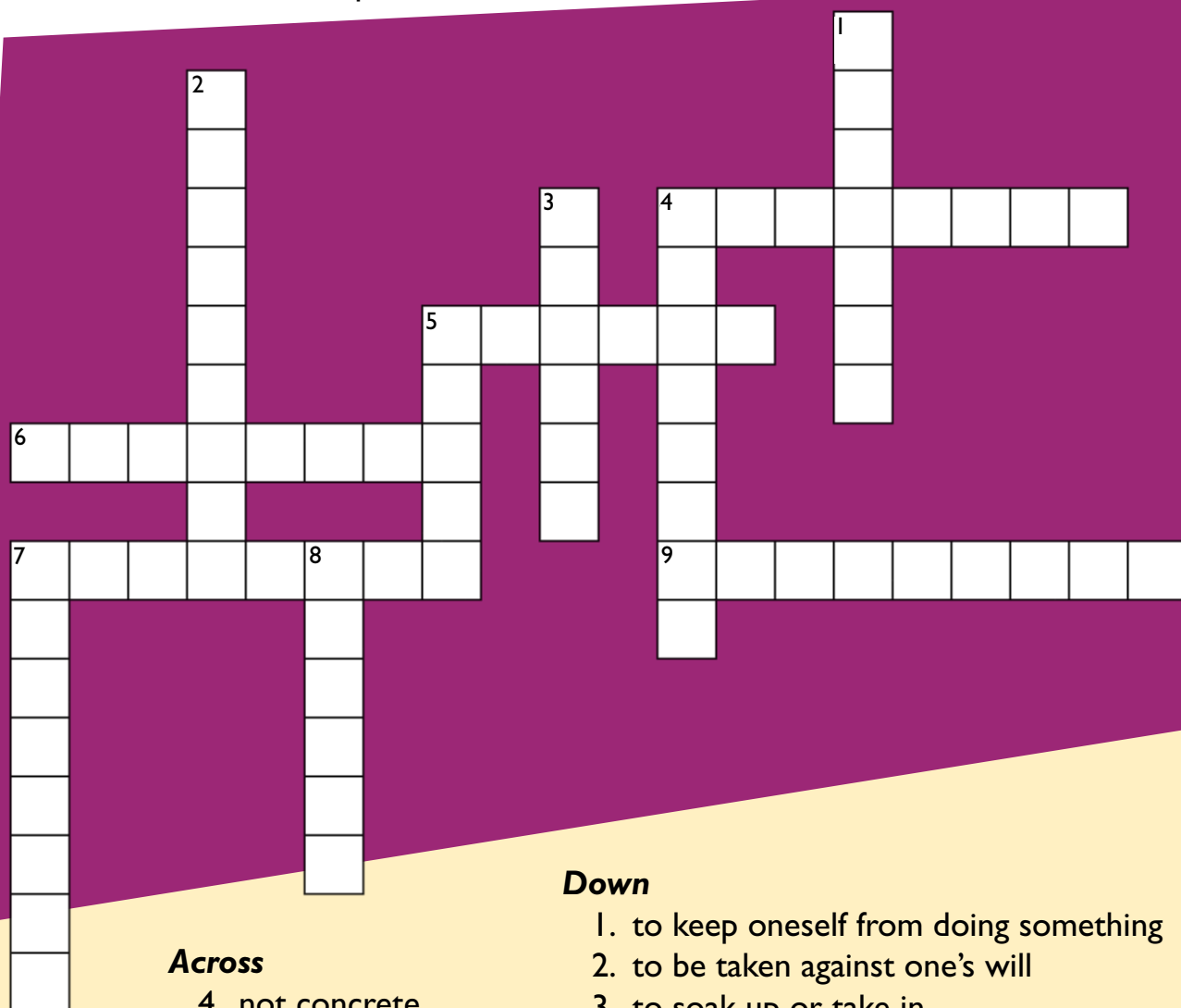


Part E: Go for the Gold!



Crossword Puzzle

Directions: Read the clues and complete the crossword puzzle.



Across

4. not concrete
5. not present
6. to give up power
7. more than enough
9. a hobby

Down

1. to keep oneself from doing something
2. to be taken against one's will
3. to soak up or take in
4. not normal
5. to turn away
7. harsh or rough
8. to take away by force

Name: _____

Unit: _____ Lesson: _____

Circle one:

Prefix

Base

Suffix

Definition: _____

Words with this prefix/base/suffix:

Word Work Activities

Choose 3 words with this prefix/base/suffix and define each word.

Choose 3 words with this prefix/base/suffix and find synonyms and antonyms for each word.

Name: _____

Unit: _____ Lesson: _____

Choose 3 words with this prefix/base/suffix and use each word in a sentence.

Choose 3 words with this prefix/base/suffix and draw a picture for each word.

Find 2 words with this prefix/base/suffix in an authentic text. Write the sentence in which it is found and circle the word.



Part A:
 Meet the Root



Divide and Conquer

Directions: "Divide" words and then "conquer" them by writing the meaning of the words. Remember that *super-, sur-* mean "on top of, above, over." An X means that the word does not have a base.

	prefix means	base means	word means
1. supervise	over	vis = see	to oversee others
2. supermarket		market	
3. surtax		tax = tax	
4. superior		X	
5. supersize		size	
6. survive		viv = live, alive	
7. surplus		plus = more	
8. supernatural		natural	
9. superman		man	
10. surpass		pass	

**Part B:**
Combine and Create**Super Words**

Directions: *Super-* and *sur-* mean "on top of" or "above." Tell what each of these words has to do with "on top of" or "above."

1. supervise _____
2. supermarket _____
3. superbowl _____
4. surface _____

**DID
YOU
KNOW?**

The famous character named Superman was created by a German named Friedrich Nietzsche (1844–1900). In his writings, Nietzsche described an imaginary human being who was supernaturally strong, powerful, and intelligent. This creature could run super-fast, was super-strong, and super-brave. He was smarter and stronger than any man who ever lived. Nietzsche, who wrote in German, called his hero *ubermensch*. When translated into English, the German word *ubermensch* became a brand-new English word: *superman*. This is how Superman began as the hero we know who can "leap tall buildings in a single bound."

Part C:
Read and Reason



Haiku

Directions: Read the following haiku and answer the questions.

Superman flies high,
superior to bad guys,
a superb good guy.



According to the haiku, explain how we know that Superman is extraordinary or special.

Using the model above, add a new final line (five syllable beat).

Superman flies high,
superior to bad guys,



Extend and Explore



HISHEWPUGRYA

[illegible][illegible]

													
--	--	--	--	---	--	---	--	--	--	---	--	--	--

○		○	○			○
---	--	---	---	--	--	---

--	--	--	--	--

--	--	--

--	--	--

Part E:
Go for the Gold!



Sixteen Square Wordo

Directions: This game is like Bingo. First, choose a free box and mark it with an X. Then choose words from the word list provided by your teacher and write one word in each box. You can choose the box for each word. Then, your teacher will give a clue for each word. Make an X in the box for each word you match to the clue. If you get four Xs in a row, column, diagonal, or four corners, call out, "Wordo!"

Name: _____

Unit: _____ Lesson: _____

Circle one:

Prefix

Base

Suffix

Definition: _____

Words with this prefix/base/suffix:

Word Work Activities

Choose 3 words with this prefix/base/suffix and define each word.

Choose 3 words with this prefix/base/suffix and find synonyms and antonyms for each word.

Name: _____

Unit: _____ Lesson: _____

Choose 3 words with this prefix/base/suffix and use each word in a sentence.

Choose 3 words with this prefix/base/suffix and draw a picture for each word.

Find 2 words with this prefix/base/suffix in an authentic text. Write the sentence in which it is found and circle the word.



Part A: Meet the Root

Divide and Conquer



Directions: "Divide" words and then "conquer" them by writing the meaning of the words. Remember that every word in this list begins with the prefix *ad-*, which means "to, toward, add to."

Vocabulary Tip: When a double consonant occurs at the beginning of a word, divide the word between the double consonant. Conquer the new word by connecting the meaning of each of its parts.

	prefix means	base means	word means
1. adhesive	<u>to</u>	<u>hes = stick, cling</u>	<u>a substance that sticks or clings to objects</u>
2. attract	<u></u>	<u>tract = pull, draw, drag</u>	<u></u>
3. affect	<u></u>	<u>fect = do, make</u>	<u></u>
4. alliteration	<u></u>	<u>liter = letter</u>	<u></u>
5. accelerate	<u></u>	<u>celer = swift</u>	<u></u>
6. appear	<u></u>	<u>pear = seem</u>	<u></u>
7. attach	<u></u>	<u>tach = touch</u>	<u></u>
8. aggressive	<u></u>	<u>gress = step</u>	<u></u>
9. affirm	<u></u>	<u>firm = firm</u>	<u></u>
10. adverb	<u></u>	<u>verb = verb, word</u>	<u></u>

Part B:
Combine and Create

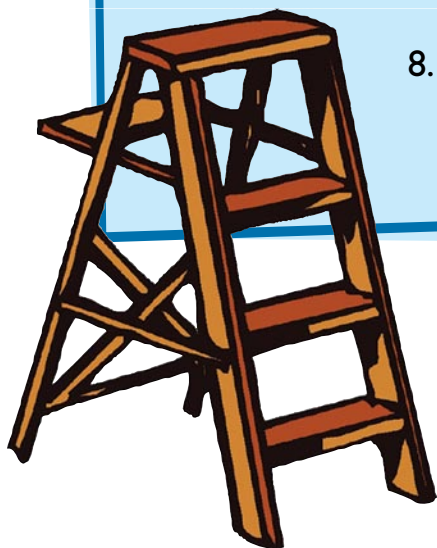


Word Ladder

Directions: Climb the word ladder by reading the clues and then writing the correct words.

1. Write the word *address*. _____
2. Take off two letters to make something that women wear. _____
3. Take off one letter and change another letter to make a boy's name.

4. Change one letter to make a flower. _____
5. Change one letter to make a facial feature. _____
6. Change one letter to make a short letter. _____
7. Change one letter to make a boy's name. _____
8. Change one letter to make a word that is written above the address on envelopes. _____

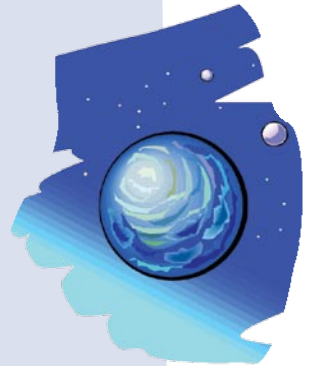


**Part C:**
Read and Reason**The Alien**

Directions: Read the following short story and answer the questions.

Once, on a planet far, far away, there lived an admirable alien named Apple. Apple had many friends, and she liked to line them up as if they were a big crowd, telling them which row to sit in and what seats to take. Apple liked to stand in the middle of her living room and deliver long speeches.

On one December morning, cold and brisk, she lined them up, telling them which row to sit in and what seat to take, and began to give a speech. "I admire you," she told them. "You have adapted your way of living for your new queen." Her friends looked puzzled, glancing around at each other, most specifically at the person who was adjacent to them. "You look puzzled, my adversaries. Accept my admiration for you, for I am your new queen."

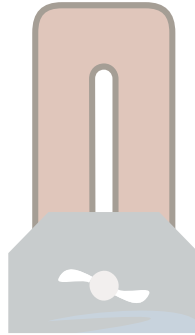
**Questions:**

1. What does it mean to be an *admirable* alien?

2. When Apple says that she *admires* her friends, how is she using the word? Why might she be saying this to them?



Part D:
Extend and Explore



Unscramble the Words

Directions: Unscramble each of the words.

NEDTAV

--	--	--	--	--	--

DASHINOE

--	--	--	--	--	--	--	--

YSDEAVRAR

--	--	--	--	--	--	--	--	--

NUANLA

--	--	--	--	--	--

LECTOALA

--	--	--	--	--	--	--	--

BAISCRE

--	--	--	--	--	--	--



Part E: Go for the Gold!

Word Search

Directions: Find the words listed below in the puzzle. Words can be across, down, diagonal, or backwards.

ADJACENT
ADJUST
ADMIRE
ADVISE

ADVERTISE
ADDRESS
ADMIRABLE
ADVERSARY

ADDITION
ADJECTIVE
ADMIRATION
ADVERSITY

ADAPT
ADVERB
ADMIT

C	G	H	N	T	J	I	K	L	T	R	R	N	P
E	A	D	J	A	C	E	N	T	I	I	O	R	E
K	D	I	S	A	D	V	E	R	S	I	T	Y	S
O	J	V	A	O	A	D	M	I	T	L	E	M	E
H	E	U	D	D	G	A	D	A	P	T	G	S	A
N	C	D	V	K	M	I	R	S	S	G	I	O	O
Y	T	R	E	A	U	I	O	N	M	V	Y	T	E
P	I	G	R	D	M	O	R	F	D	F	A	L	S
X	V	S	B	D	E	K	I	A	L	U	D	U	I
U	E	G	A	I	H	O	H	D	B	K	D	E	T
E	V	I	N	T	S	M	I	J	T	L	R	H	R
G	A	D	M	I	R	E	L	U	R	A	E	C	E
A	R	R	R	O	E	T	T	S	H	I	S	K	V
A	K	O	Y	N	L	R	E	T	B	M	S	I	D
Y	H	I	O	M	Y	R	A	S	R	E	V	D	A

Name: _____

Unit: _____ Lesson: _____

Circle one:

Prefix

Base

Suffix

Definition: _____

Words with this prefix/base/suffix:

Word Work Activities

Choose 3 words with this prefix/base/suffix and define each word.

Choose 3 words with this prefix/base/suffix and find synonyms and antonyms for each word.

Name: _____

Unit: _____ Lesson: _____

Choose 3 words with this prefix/base/suffix and use each word in a sentence.

Choose 3 words with this prefix/base/suffix and draw a picture for each word.

Find 2 words with this prefix/base/suffix in an authentic text. Write the sentence in which it is found and circle the word.

Part A:
Meet the Root



Divide and Conquer

Directions: Your teacher will give you a list of words. “Divide” words into word units (either as the two parts of a compound word or as a prefix and a base word). Then “conquer” them by writing the meaning of the words.

	word	word unit	word unit	word means
1.	_____	_____	_____	_____
2.	_____	_____	_____	_____
3.	_____	_____	_____	_____
4.	_____	_____	_____	_____
5.	_____	_____	_____	_____
6.	_____	_____	_____	_____
7.	_____	_____	_____	_____
8.	_____	_____	_____	_____
9.	_____	_____	_____	_____
10.	_____	_____	_____	_____



Part B: Combine and Create

Word Groups

Directions: Decide which word doesn't belong in each group and circle it. Write your reasons on each line.

aberration
abnormal
admirable

superb
adverb
abstract

assignment
dissect
disposal

DID YOU KNOW?

In 1955, an African-American woman named Rosa Parks took the bus home from her job as a seamstress at a department store in Birmingham, Alabama. In those days, buses in Alabama had an unfair policy of segregation. African-Americans could only be seated in certain spots, and they had to give up their seats if the bus was crowded. Rosa Parks had the courage to *disobey* this unfair policy. Many years later, she said that she refused to give up her seat because "I felt I had a right to stay where I was." Even though her *disobedience* was not violent, Rosa Parks was arrested and sent to jail. Her courage started a bus boycott in Alabama that eventually brought equality under the law to all Americans.

Part C:
Read and Reason

Read the Dialogue

Directions: Read the two short selections below and answer the questions.

News reporter: In tonight's news, local police are trying to allocate all of the materials collected from a recent warehouse arrest in which one suspect, who fled the scene, was injured. Later, at the hospital, doctors were able to alleviate his pain and take care of his injuries.

Question:

How is *allocate* used in the above dialogue?

How is *alleviate* used?



Jerome: "The music in that movie arrested my feelings. I felt frozen with grief when the main character died."

Gerald: "Yeah, even though he was arrogant, you really started to like his carefree spirit and giving nature."

Question:

How do the speakers use the words *arrested* and *arrogant* to make their points?



Part D: Extend and Explore



Charting Words

Directions: Work with a partner to complete the chart with as many words as you can.

	<i>-tion, -ion</i>	<i>-al</i>	<i>-or, -er</i>
<i>ab-</i>			
<i>dis-</i>			
<i>addit-</i>			
<i>attract-</i>			

Part E:
Go for the Gold!



Word Search

Directions: Find the words listed below in the puzzle. Words can be across, down, diagonal, or backwards.

ADVANCE
ALLIANCE
ALLIES
ATTEND

ATTENTION
ATTRACT
DIRECT
DISAPPEAR

DISMISS
DISOBEY
SUPERIOR
SUPERSTAR

SUPERVISE

R	T	C	A	R	T	T	A	S	D	D	D	N	O	O
Z	A	N	X	Q	Y	N	U	P	I	N	R	O	R	X
G	Q	T	O	Y	Q	P	Y	S	E	E	T	O	X	S
W	H	I	S	L	E	Z	O	T	J	K	I	W	G	I
C	Z	I	D	R	B	B	T	K	B	R	H	V	O	J
D	A	V	V	I	E	A	G	U	E	S	I	K	T	D
O	U	I	J	Y	S	P	U	P	G	A	N	V	V	X
B	S	A	S	E	T	M	U	V	Z	M	O	O	J	R
E	X	D	I	V	T	S	I	S	F	Y	I	A	W	P
A	L	L	I	A	N	C	E	S	F	K	T	D	S	H
D	I	C	M	F	K	F	E	G	S	S	N	V	E	V
N	A	P	U	D	X	Z	X	R	A	S	E	A	I	Q
R	A	E	P	P	A	S	I	D	I	D	T	N	L	G
O	L	Q	B	O	N	H	O	S	E	D	T	C	L	F
H	D	J	Q	N	N	I	T	D	U	N	A	E	A	M